



E-LOADER III
Software Uploader
user guide

©2019 ELATION PROFESSIONAL all rights reserved. Information, specifications, diagrams, images, and instructions herein are subject to change without notice. ELATION logo and identifying product names and numbers herein are trademarks of ELATION. Copyright protection claimed includes all forms and matters of copyrightable materials and information now allowed by statutory or judicial law or hereinafter granted. Product names used in this document may be trademarks or registered trademarks of their respective companies and are hereby acknowledged. All non-ELATION brands and product names are trademarks or registered trademarks of their respective companies.

ADJ PRODUCTS LLC and all affiliated companies hereby disclaim any and all liabilities for property, equipment, building, and electrical damages, injuries to any persons, and direct or indirect economic loss associated with the use or reliance of any information contained within this document, and/or as a result of the improper, unsafe, insufficient and negligent assembly, installation, rigging, and operation of this product.

ELATION PROFESSIONAL USA | 6122 S. Eastern Ave. Los Angeles, CA. 90040
323-582-3322 | Fax 323-832-9142 | www.elationlighting.com | sales@elationlighting.com

ELATION PROFESSIONAL B.V. | Junostraat 2 | 6468 EW Kerkrade, The Netherlands
+31 45 546 85 66 | Fax +31 45 546 85 96 | www.elationlighting.eu | info@elationlighting.eu

ELATION PROFESSIONAL Mexico | AV Santa Ana 30 Parque Industrial Lerma, Lerma, Mexico 52000
+52 (728) 282-7070 | ventas@elationlighting.com

ELATION CUSTOMER SUPPORT

Contact ELATION Service for any product related service and support needs.
Also visit forums.elationlighting.com with questions, comments or suggestions.

ELATION SERVICE USA - Monday - Friday 8:00am to 4:30pm PST
323-582-3322 | Fax 323-832-9142 | support@elationlighting.com

ELATION SERVICE EUROPE - Monday - Friday 08:30 to 17:00 CET
+31 45 546 85 63 | Fax +31 45 546 85 96 | support@elationlighting.eu

REPLACEMENT PARTS please visit parts.elationlighting.com

FCC STATEMENT

This device complies with Part 15 of the FCC Rules. Operation is subject to the following two conditions: (1) this device may not cause harmful interference, and (2) this device must accept any interference received, including interference that may cause undesired operation.

FCC RADIO FREQUENCY INTERFERENCE WARNINGS & INSTRUCTIONS

This product has been tested and found to comply with the limits as per Part 15 of the FCC Rules. These limits are designed to provide reasonable protection against harmful interference in a residential installation. This device uses and can radiate radio frequency energy and, if not installed and used in accordance with the included instructions, may cause harmful interference to radio communications. However, there is no guarantee that interference will not occur in a particular installation. If this device does cause harmful interference to radio or television reception, which can be determined by turning the device off and on, the user is encouraged to try to correct the interference by one or more of the following methods:

- Reorient or relocate the device.
- Increase the separation between the device and the receiver.
- Connect the device to an electrical outlet on a circuit different from which the radio receiver is connected.
- Consult the dealer or an experienced radio/TV technician for help.

Document Version: An updated version of this document may be available online. Please check www.elationlighting.com for the latest revision/update of this document before beginning installation and use.

Date	Document Version	Notes
4/12/19	1	Initial release

CONTENTS

General Information	4
Limited Warranty (USA Only)	5
Safety Guidelines	6
Overview	7
Compatible Elation Models	8
Operations	10
Recharging Battery	12
Specifications	13
Optional Components & Accessories	14

GENERAL INFORMATION

INTRODUCTION

Please read and understand all instructions in this manual carefully and thoroughly before attempting to operate this product. These instructions contain important safety and use information.

UNPACKING

The products in this kit have been thoroughly tested and have been shipped in perfect operating condition. Carefully check the shipping carton for damage that may have occurred during shipping. If the carton appears to be damaged, carefully inspect each unit included for damage and be sure all accessories necessary to operate the units have arrived intact. In the event damage has been found or parts are missing, please contact our customer support team for further instructions. Please do not return this kit to your dealer without first contacting customer support at the number listed below. Please do not discard the shipping carton in the trash. Please recycle whenever possible.

ELATION CUSTOMER SUPPORT

Contact ELATION Service for any product related service and support needs. Also visit forums.elationlighting.com with questions, comments or suggestions.

ELATION SERVICE USA - Monday - Friday 8:00am to 4:30pm PST

323-582-3322 | Fax 323-832-9142 | support@elationlighting.com

ELATION SERVICE EUROPE - Monday - Friday 08:30 to 17:00 CET

+31 45 546 85 63 | Fax +31 45 546 85 96 | support@elationlighting.eu

REPLACEMENT PARTS please visit parts.elationlighting.com

LIMITED WARRANTY (USA ONLY)

1. Elation Professional hereby warrants, to the original purchaser, Elation Professional products to be free of manufacturing defects in material and workmanship for a period of two years (730 days), and Elation Professional product rechargeable batteries to be free of manufacturing defects in material and workmanship for a period of six months (180 days), from the original date of purchase. This warranty excludes discharge lamps and all product accessories. This warranty shall be valid only if the product is purchased within the United States of America, including possessions and territories. It is the owner's responsibility to establish the date and place of purchase by acceptable evidence, at the time service is sought.
2. For warranty service, send the product only to the Elation Professional factory. All shipping charges must be pre-paid. If the requested repairs or service (including parts replacement) are within the terms of this warranty, Elation Professional will pay return shipping charges only to a designated point within the United States. If any product is sent, it must be shipped in its original package and packaging material. No accessories should be shipped with the product. If any accessories are shipped with the product, Elation Professional shall have no liability what so ever for loss and/or or damage to any such accessories, nor for the safe return thereof.
3. This warranty is void if the product serial number and/or labels are altered or removed; if the product is modified in any manner which Elation Professional concludes, after inspection, affects the reliability of the product; if the product has been repaired or serviced by anyone other than the Elation Professional factory unless prior written authorization was issued to purchaser by Elation Professional; if the product is damaged because not properly maintained as set forth in the product instructions, guidelines and/or user manual.
4. This is not a service contract, and this warranty does not include any maintenance, cleaning or periodic check-up. During the periods as specified above, Elation Professional will replace defective parts at its expense, and will absorb all expenses for warranty service and repair labor by reason of defects in material or workmanship. The sole responsibility of Elation Professional under this warranty shall be limited to the repair of the product, or replacement thereof, including parts, at the sole discretion of Elation Professional. All products covered by this warranty were manufactured after January 1, 1990, and bare identifying marks to that effect.
5. Elation Professional reserves the right to make changes in design and/or performance improvements upon its products without any obligation to include these changes in any products theretofore manufactured.
6. No warranty, whether expressed or implied, is given or made with respect to any accessory supplied with the products described above. Except to the extent prohibited by applicable law, all implied warranties made by Elation Professional in connection with this product, including warranties of merchantability or fitness, are limited in duration to the warranty periods set forth above. And no warranties, whether expressed or implied, including warranties of merchantability or fitness, shall apply to this product after said periods have expired. The consumer's and/or dealer's sole remedy shall be such repair or replacement as is expressly provided above; and under no circumstances shall Elation Professional be liable for any loss and/or damage, direct and/or consequential, arising out of the use of, and/or the inability to use, this product.
7. This warranty is the only written warranty applicable to Elation Professional products and supersedes all prior warranties and written descriptions of warranty terms and conditions heretofore published.

WARRANTY RETURNS

All returned service items whether under warranty or not, must be freight pre-paid and accompany a return authorization (R.A.) number. The R.A. number must be clearly written on the outside of the return package. A brief description of the problem as well as the R.A. number must also be written down on a piece of paper and included in the shipping container. If the unit is under warranty, you must provide a copy of your proof of purchase invoice. Items returned without a R.A. number clearly marked on the outside of the package will be refused and returned at customer's expense. You may obtain a R.A. number by contacting customer support.

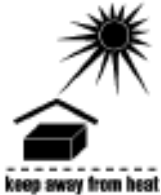
SAFETY GUIDELINES

This device is a sophisticated piece of electronic equipment. To guarantee a smooth operation, it is important to follow all instructions and guidelines in this manual. The manufacturer of this device is not responsible for injury and/or damages resulting from the misuse of this device due to the disregard of the information printed in this manual. Only qualified and/or certified personnel should use this device. Any modifications to the device will void the original manufactures warranty and increase the risk of damage and/or personal injury.

DO NOT shake device, avoid brute force when using



INDOORS USE ONLY!
DO NOT EXPOSE DEVICE RAIN AND MOISTURE!
KEEP FLAMMABLE MATERIALS AWAY FROM DEVICE!



DO NOT EXPOSE DEVICE TO HEAT OR FIRE!
DO NOT EXPOSE DEVICE TO FLAMMABLE MATERIALS!



DO NOT EXPOSE DEVICE TO HIGH HUMIDITY!
DO NOT EXPOSE DEVICE TO EXTREME VIBRATIONS!
DO NOT REMOVE EXTERNAL COVER/HOUSING!
DO NOT PLUG DEVICE INTO A DIMMER PACK!



DO NOT USE DEVICE IF THE BATTERY IS DAMAGED, DEFORMED, OR HAS AN ODOR!
DO NOT DISASSEMBLE THE BATTERY!
DISPOSE OF BATTERY PROPERLY ACCORDING TO LOCAL, STATE, AND COUNTRY REGULATIONS!

OVERVIEW

The **E-LOADER III™** is a battery powered hand held software uploader device used to update Elation compatible lighting fixtures. Easily upload a software update to an Elation lighting fixture by connecting the **E-LOADER III™** to the fixture using a 3pin DMX cable. Elation software updates (not included) are stored on a MICRO SD card (included) and inserted into the uploader. **E-LOADER III™** features an LCD display, 6 button control panel, a MICRO SD card slot, a 3pin XLR DMX OUT, USB cable, and a blank MICRO SD card. Please contact Elation Service for details about available Elation fixture software updates.

BOX CONTENTS:

- Battery
- USB Cable
- USB AC Adapter
- MICRO SD Card
- USB to MICRO SD Card Adapter



1. DMX OUT: 3pin XLR DMX output signal



2. Battery Compartment Cover



3. LCD Display
4. MODE/ESC button
5. UP button
6. LEFT button
7. RIGHT button
8. ENTER button
9. DOWN button



10. Power switch
11. Micro SD Slot
12. Power supply

COMPATIBLE ELATION MODELS:

*Partial listing of models. Contact Elation Service for more details.

PLATINUM SEVEN
SATURA SPOT LED PROFILE
E SPOT III
PLATINUM HFX
PLATINUM FLX
PLATINUM SPOT III
PLATINUM BX
PLATINUM SBX
PLATINUM PROFILE 180
PLATINUM WASH 16R PRO
RAYZOR Q12 ZOOM
WW PROFILE
COLOUR 5 PROFILE
DW FRESNEL
DW PROFILE
SATURA SPOT CMY
RAYZOR BEAM 2R
DESIGN WASH LED ZOOM CW
DESIGN WASH LED ZOOM
VOLT Q5/Q5e
LEVEL Q7 IP
LEVEL Q7
SATURA SPOT LED PRO
RAYZOR Q7
RAYZOR Q12

PLATINUM SPOT LED PRO II
PLATINUM SPOT LED II
E SPOT LED II
PLATINUM BEAM 5R EXTREME
ELAR 162 TRI PAR
PLATINUM WASH ZFX PRO XL
PLATINUM WASH ZFX PRO
PLATINUM WASH LED ZOOM
PLATINUM SPOT LED PRO
PLATINUM SPOT LED
PLATINUM PROFILE 35
PLATINUM SPOT 35
PLATINUM SPOT 15R BASIC
PLATINUM BEAM 15R PRO
PLATINUM BEAM 5R PRO
PLATINUM BEAM 5R
PLATINUM SPOT 5R
PLATINUM SPOT 5R PRO
PLATINUM SPOT 15R PRO
ELAR TRI BRICK
ELAR DW BRICK
ELAR 216 PANEL DW
ELAR 216 PANEL RGBW
ELAR 108 PAR RGBW

OPERATION



1. With the software update stored on the MICRO SD card, insert the SD card into the slot located at the bottom of the E-Loader III.

2. Connect the signal output cable to the fixture to be updated.

3. With the fixture connected, power up the fixture, and then power up the E-Loader III within 10-seconds of powering up the fixture.

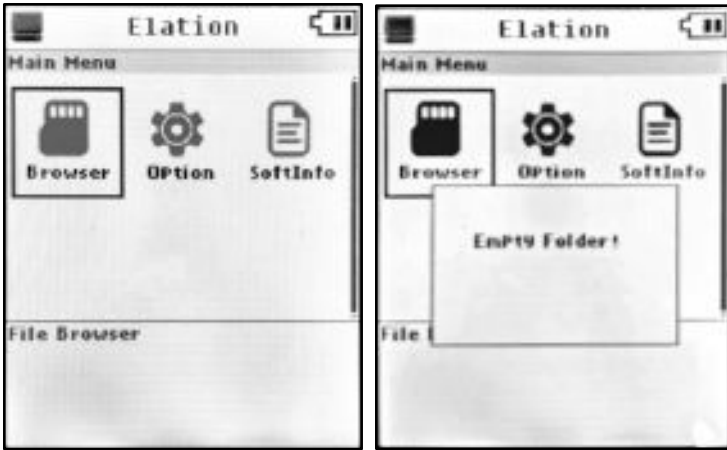
4. If the SD card has not been inserted, the screen displays the message, "MicroSD Card Error!"



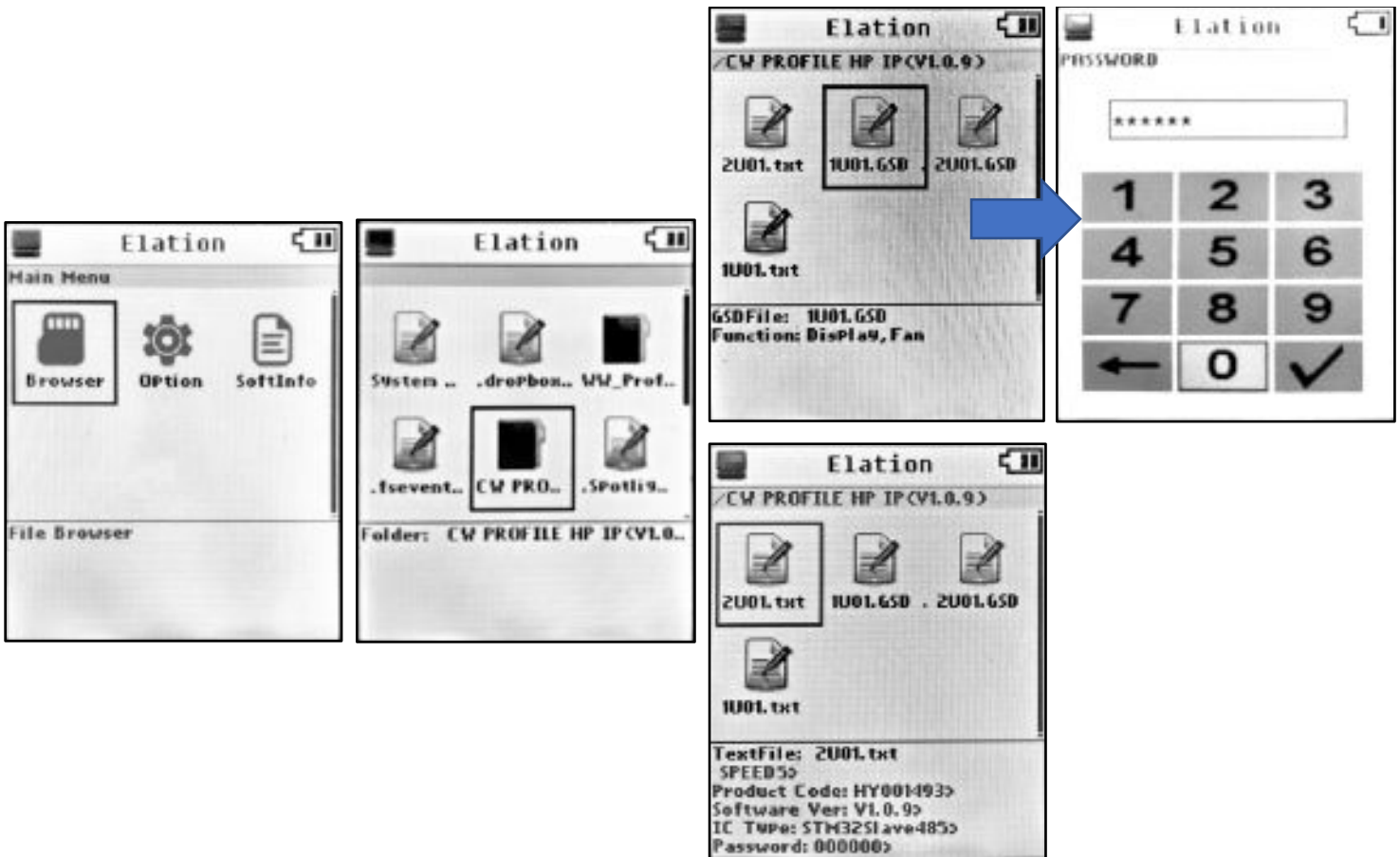
5. Press **MODE/ESC** to enter SD card menu, then press ← → to select Browser, Option, or SoftInfo, and press <Enter> ↵



OPERATION BROWSER

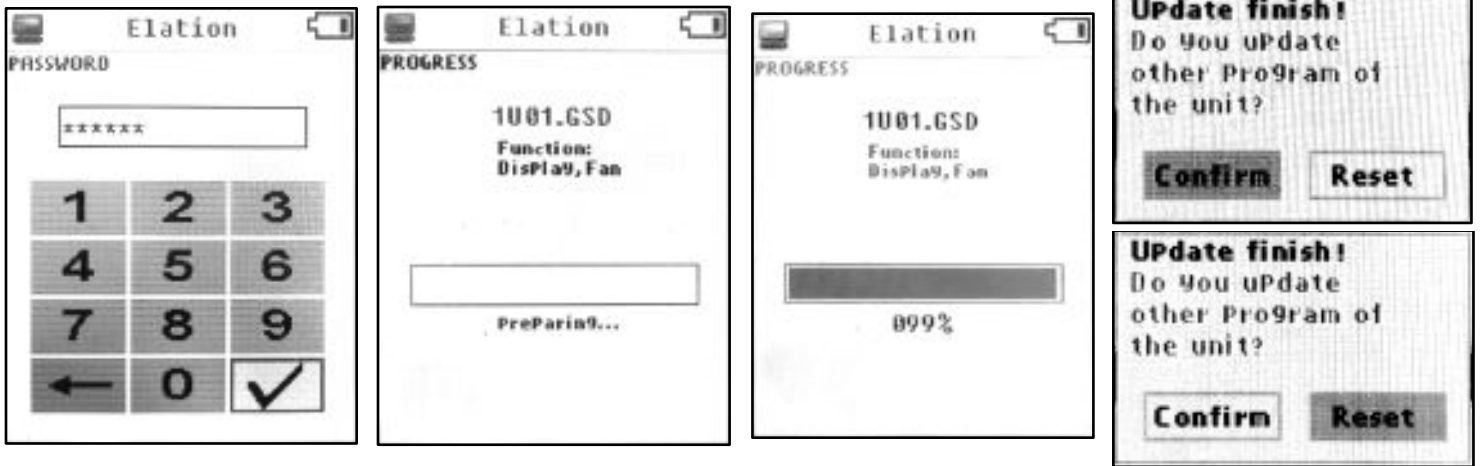


Note that out of the box, the MicroSD card is blank. With it inserted, selecting Browser and pressing <Enter> ↵, the screen displays the message, “Empty Folder!”



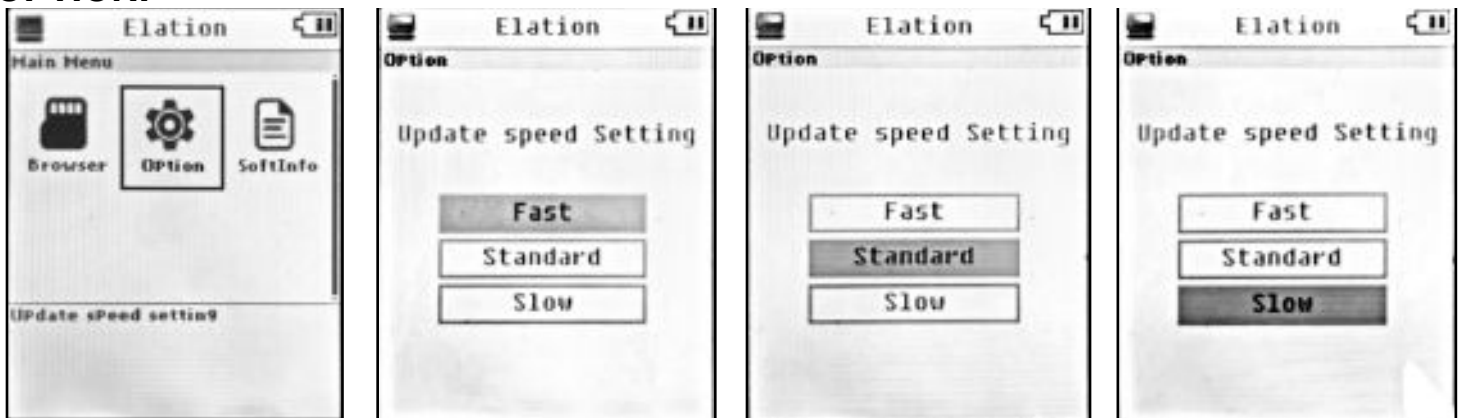
In the Browser menus, select the fixture folder to be updated and Press <Enter> ↵ (note that all non-fixture files displayed here are harmless corrupted files and will not affect the software upload). With the folder selected, the GSD and TXT files will display on the screen. Whether next selecting a GSD file or a TXT file, the function of the file will show on the lower left of the screen (display is limited to 5 lines). Select the GSD file you want to upload. Press <Enter> ↵. Enter the password; the default password is “000000”. (The TXT files are merely for information and perform no operation).

OPERATION



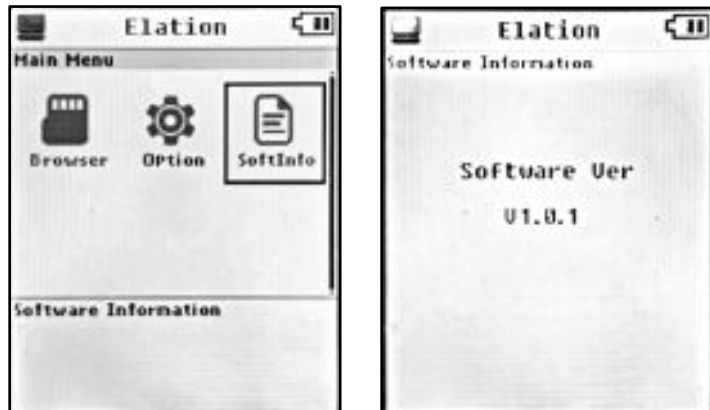
With the password entered (by default, this is 000000), select the checkmark and Press <Enter>. (You may find it necessary to delete or backspace a number, just select the arrow and enter). The screen now displays a PROGRESS window, showing an empty progress bar and the message, "Preparing...". After the progress bar moves to 100%, a popup screen displays "Update finish!" and asks, "Do you update other Program of the unit?" Clicking the Confirm button allows you to upload another program, whereas the Reset button ends the uploading process.

OPTION:



Selecting the Option button opens the Option display, which allows you to choose the Update speed Setting between Fast, Standard, and Slow.

SOFTWARE INFORMATION



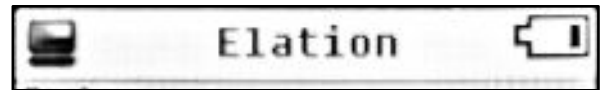
Selecting the SoftInfo button opens the Software Information display.

RECHARGING BATTERY



DO NOT USE DEVICE IF THE BATTERY IS DAMAGED, DEFORMED, OR HAS AN ODOR!
DO NOT DISASSEMBLE THE BATTERY!
DISPOSE OF BATTERY PROPERLY ACCORDING TO LOCAL, STATE, AND COUNTRY REGULATIONS!

DO NOT OPERATE DEVICE IF YOU ARE NOT QUALIFIED TO DO SO!



Recharge battery when indicator is low by plugging in the included power supply.



Only use the battery specified by Elation Lighting.

SPECIFICATIONS

Control / Connections:

- 6 Button Touch Control Panel
- LCD Menu Display
- 3pin DMX Out
- Micro SD Card Slot
- Mini USB Input
- With Wired Digital Communications Network

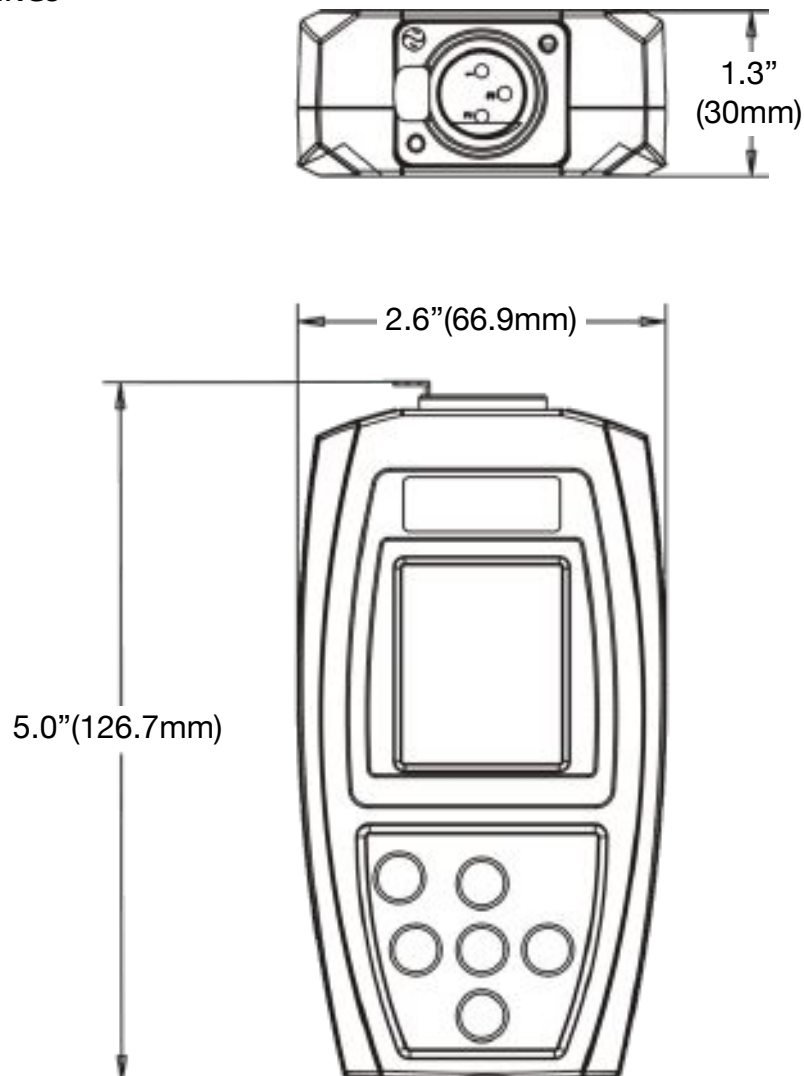
Size / Weight:

- Length: 5.0" (126.7mm)
- Width: 2.6" (66.9mm)
- Vertical Height: 1.2" (30mm)
- Weight: 0.3lbs. (0.13kg)

Electrical:

- 5VDC (Internal Battery)

DIMENSIONAL DRAWINGS



OPTIONAL COMPONENTS & ACCESSORIES

Model (SKU)	Description
AC3PM5PFM	1 ft. (0.3m) 3pin Male to 5pin Female DMX Cable
AC3PDMX5PRO	5 ft. (1.5m) 3pin PRO DMX Cable
AC5PDMX5PRO	5 ft. (1.5m) 5pin PRO DMX Cable
	Additional cable lengths available

